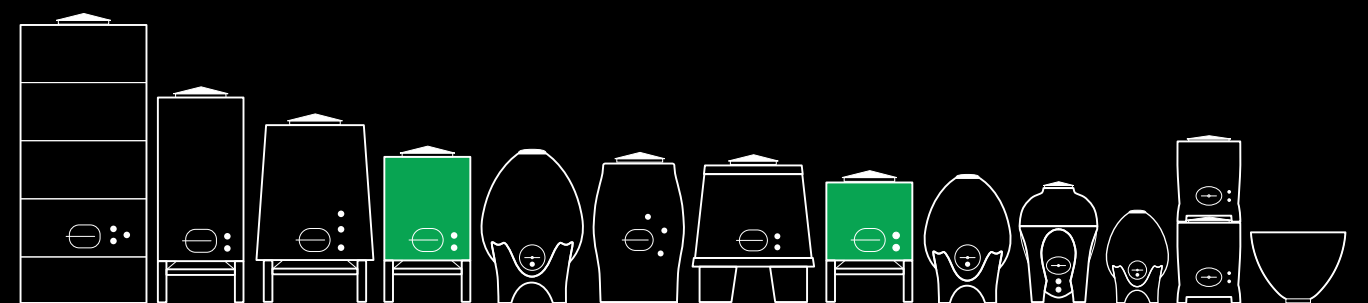
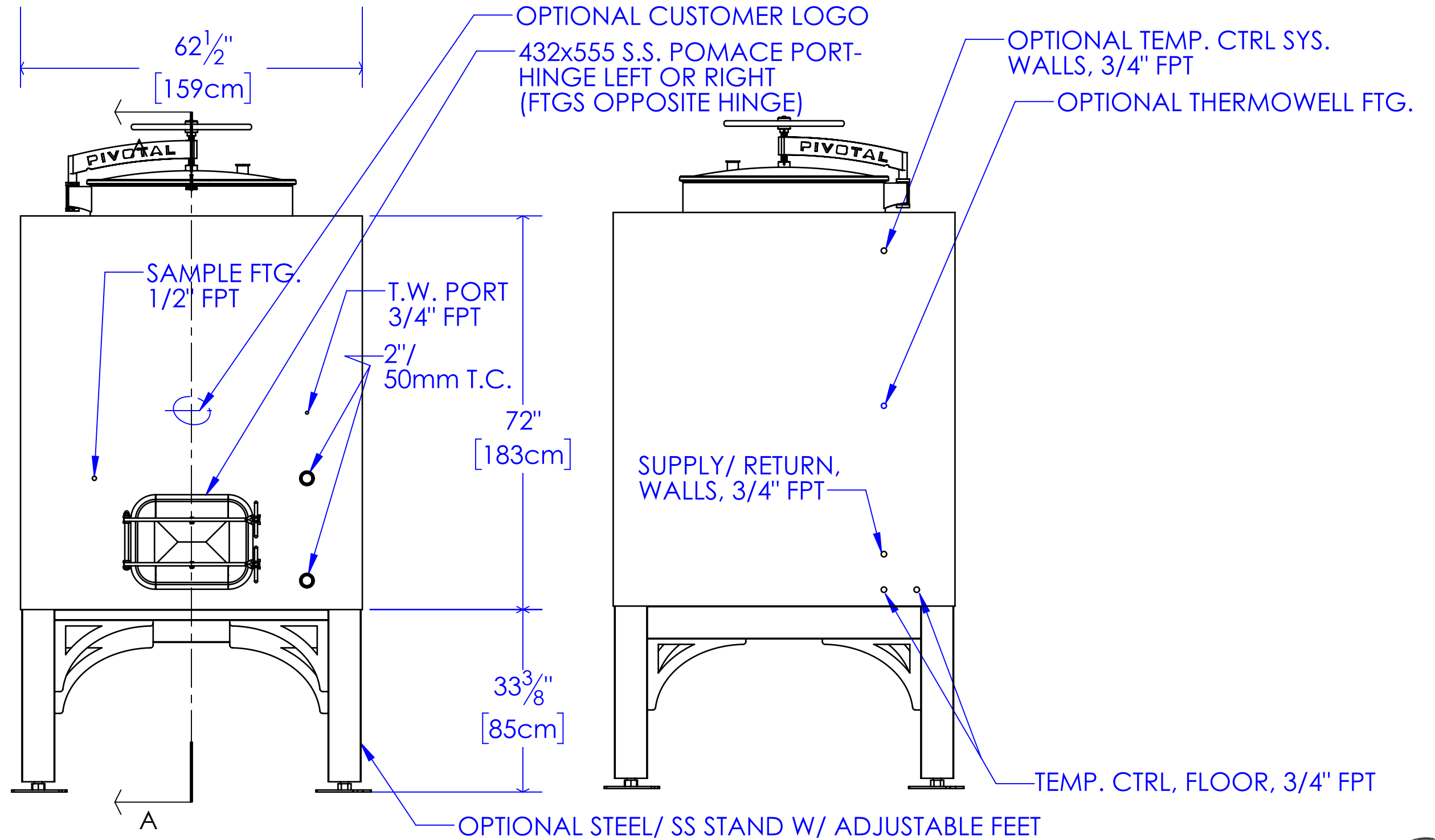


# Concrete Square Tanks



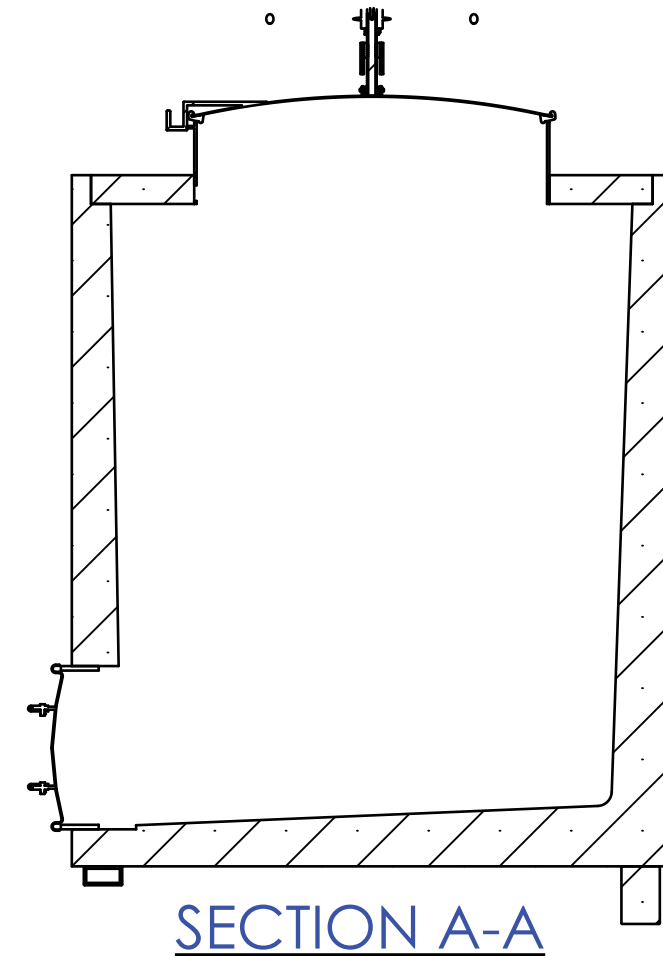
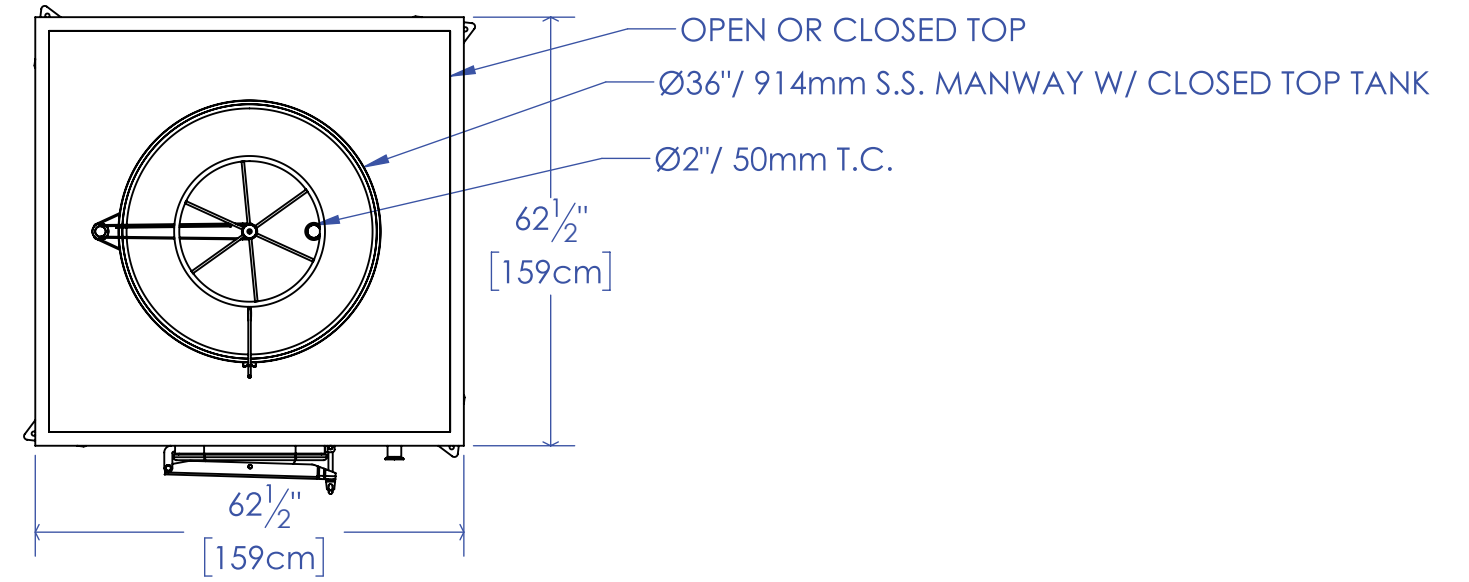
CONCRETE SQUARE | 555 OR 800 GAL

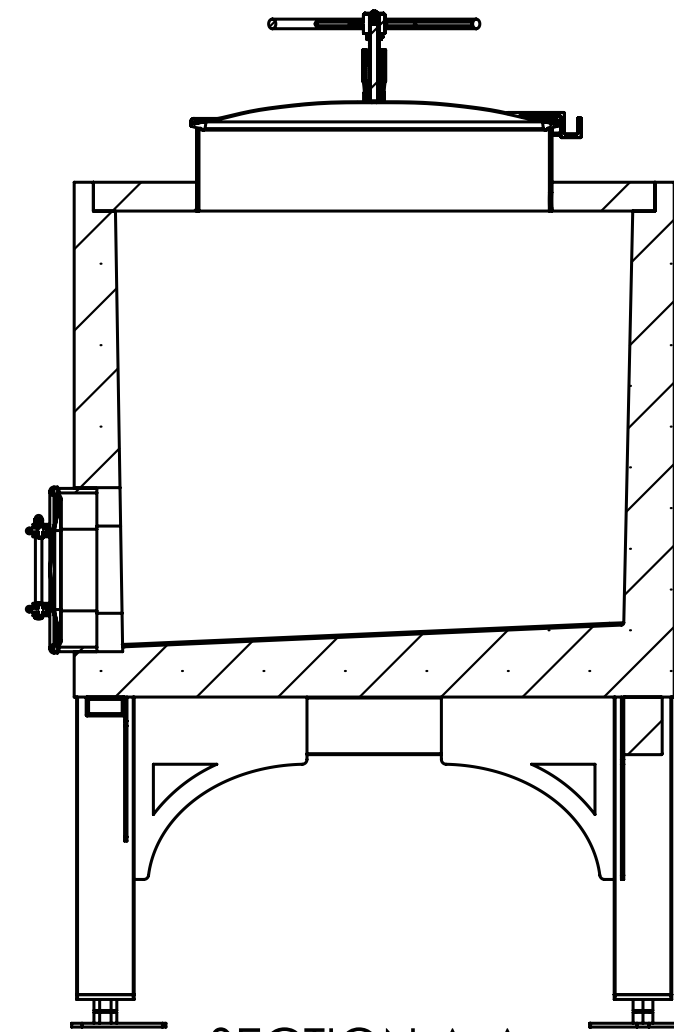
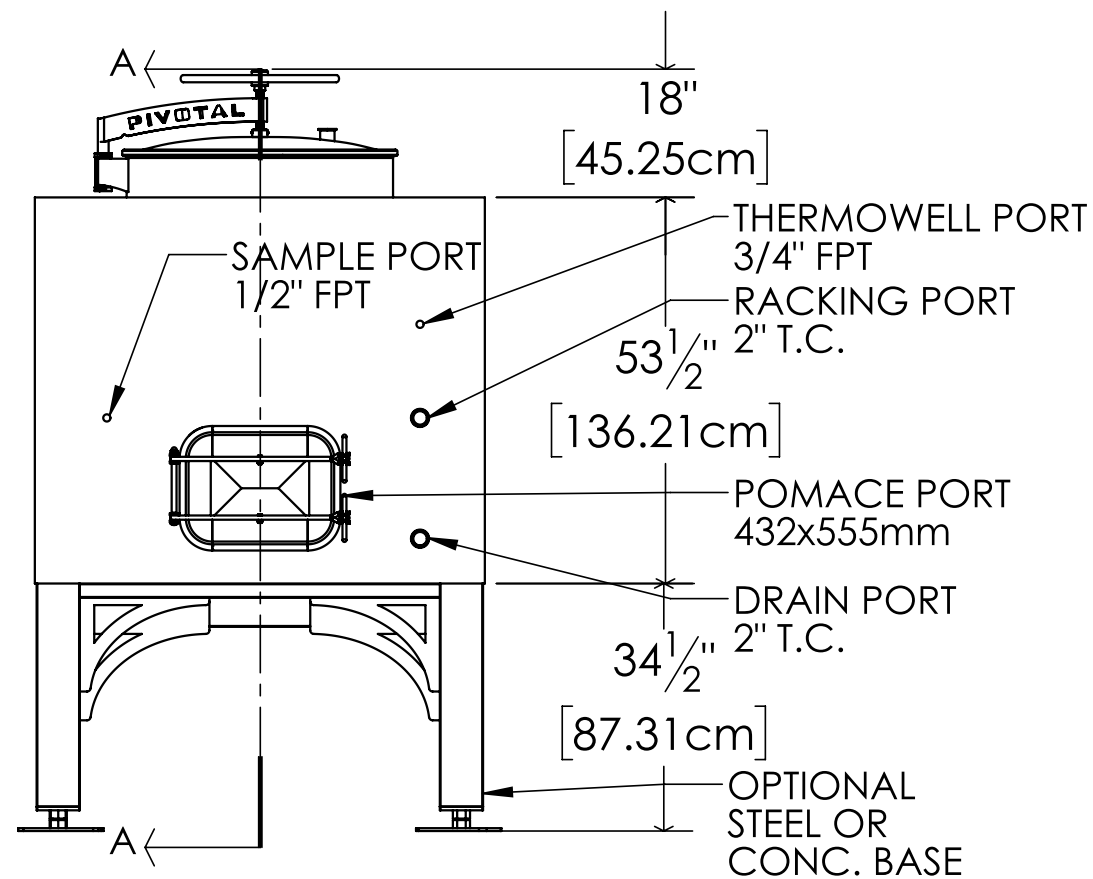
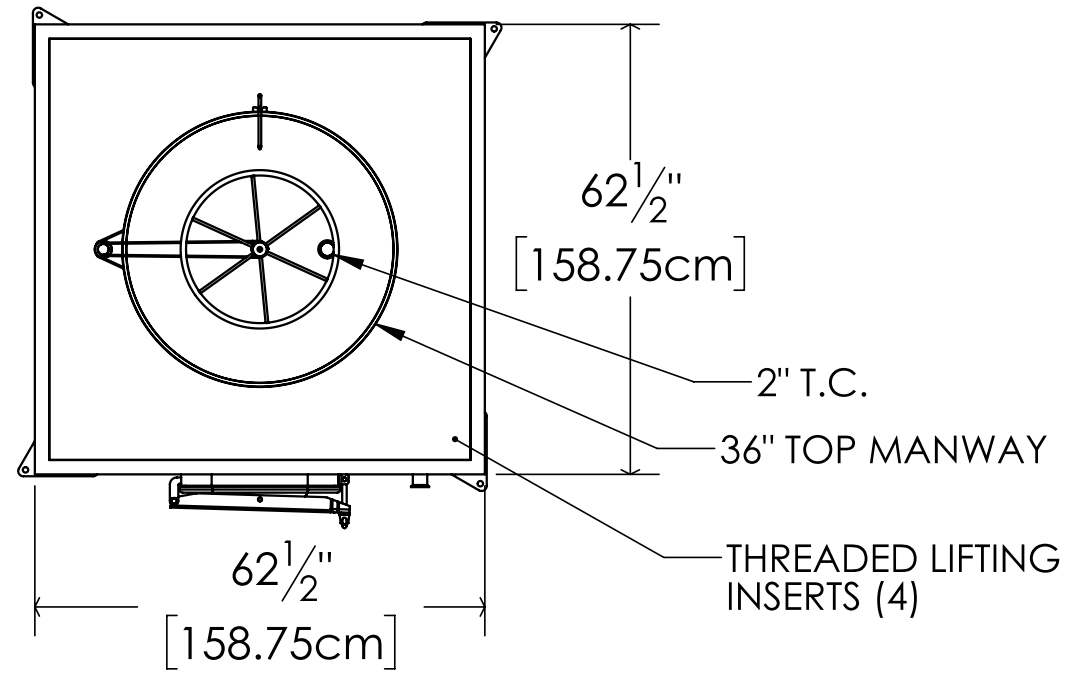




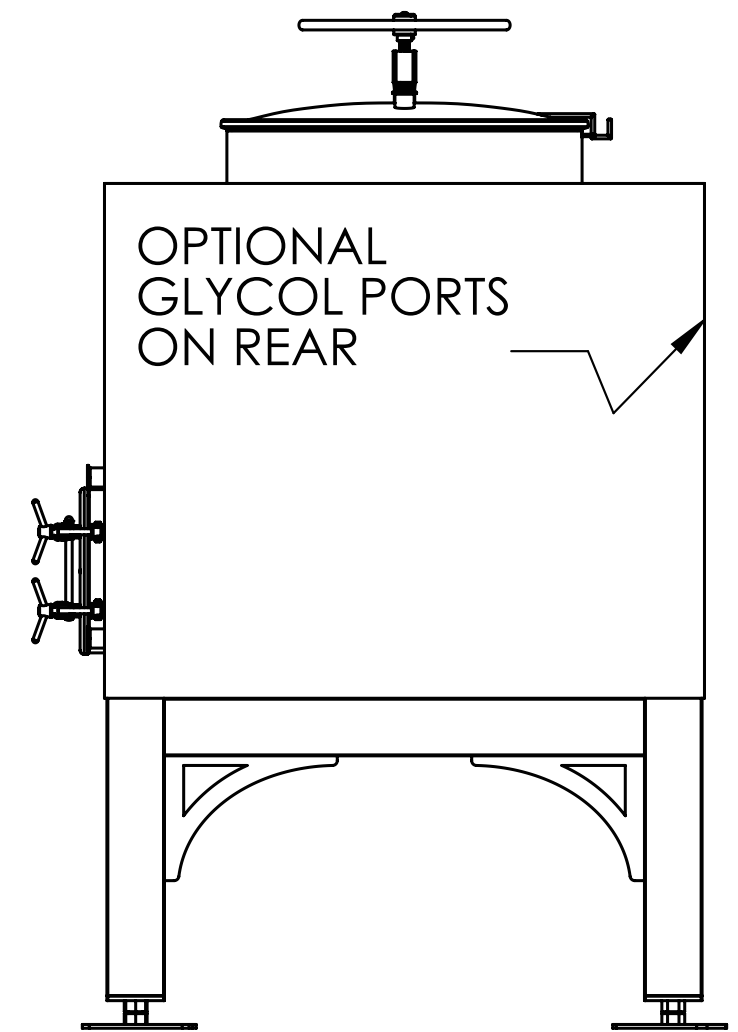


555 Gallon Square Tanks with Pivotal Manway Covers for Artesa Estate Vineyards & Winery





SECTION A-A  
SCALE 1 : 32





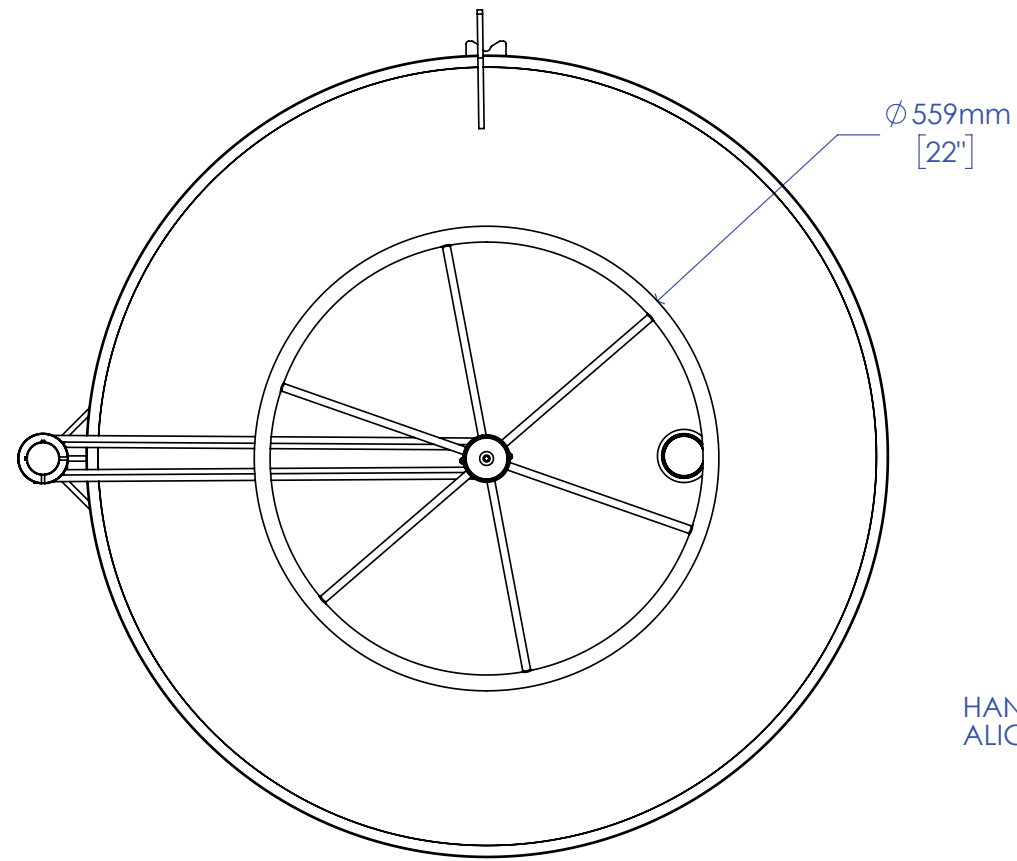
## Square Concrete Tanks (Two Sizes)

More Space-Efficient Than Eggs

Square tanks maximize spatial efficiency, making them an excellent choice for wineries aiming to optimize layout—particularly in new or space-constrained facilities.

The geometry of square concrete tanks also promotes a favorable ratio of skin contact with the grape must, enhancing extraction of color and flavor compounds.

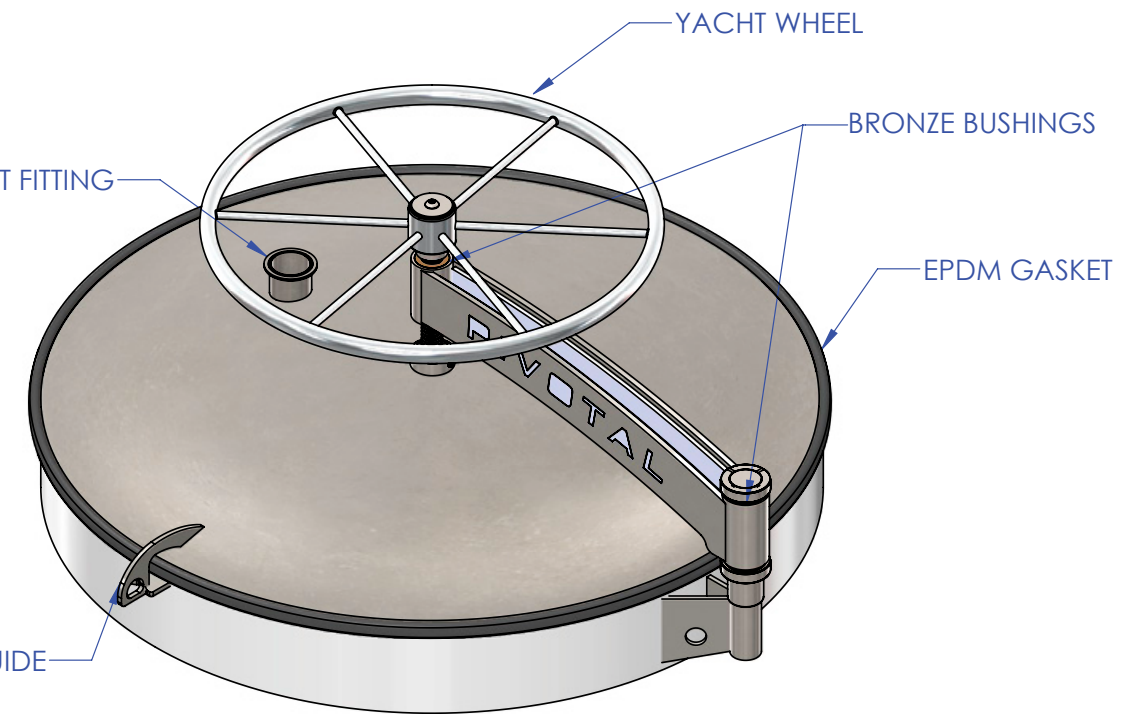
Concrete's porous nature allows for gentle micro-oxidation, which softens tannins and elevates the wine's fruit and terroir expression. Thanks to its high thermal mass, concrete naturally moderates fermentation temperatures.



Ø559mm  
[22"]

2" T.C. VENT FITTING

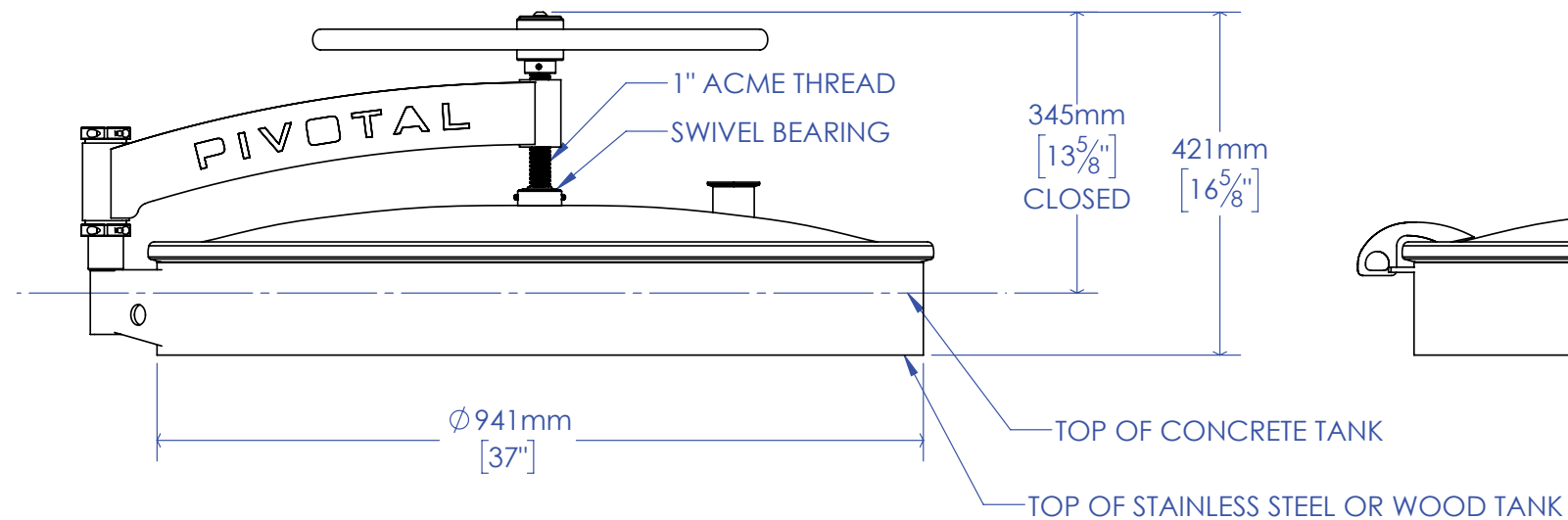
HANDLE AND  
ALIGNMENT GUIDE



YACHT WHEEL

BRONZE BUSHINGS

EPDM GASKET



1" ACME THREAD  
SWIVEL BEARING

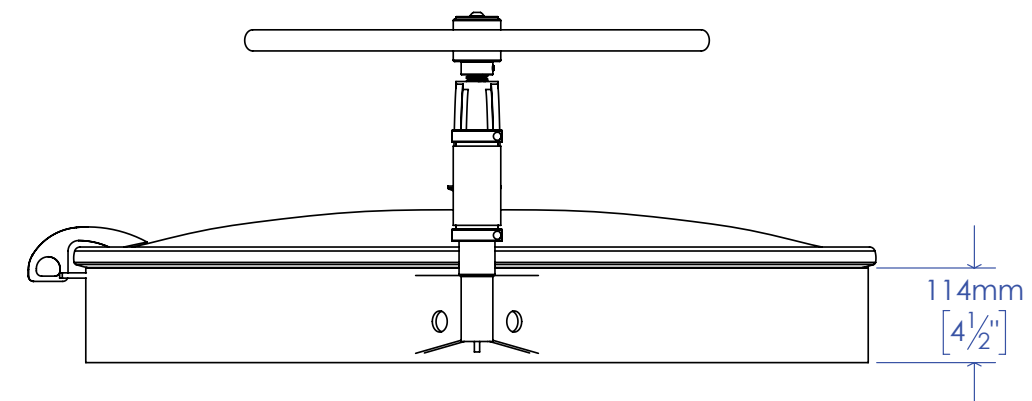
345mm  
[13<sup>5</sup>/<sub>8</sub>"]  
CLOSED

421mm  
[16<sup>5</sup>/<sub>8</sub>"]

Ø941mm  
[37"]

TOP OF CONCRETE TANK

TOP OF STAINLESS STEEL OR WOOD TANK



114mm  
[4<sup>1</sup>/<sub>2</sub>"]

**PROPRIETARY AND CONFIDENTIAL**

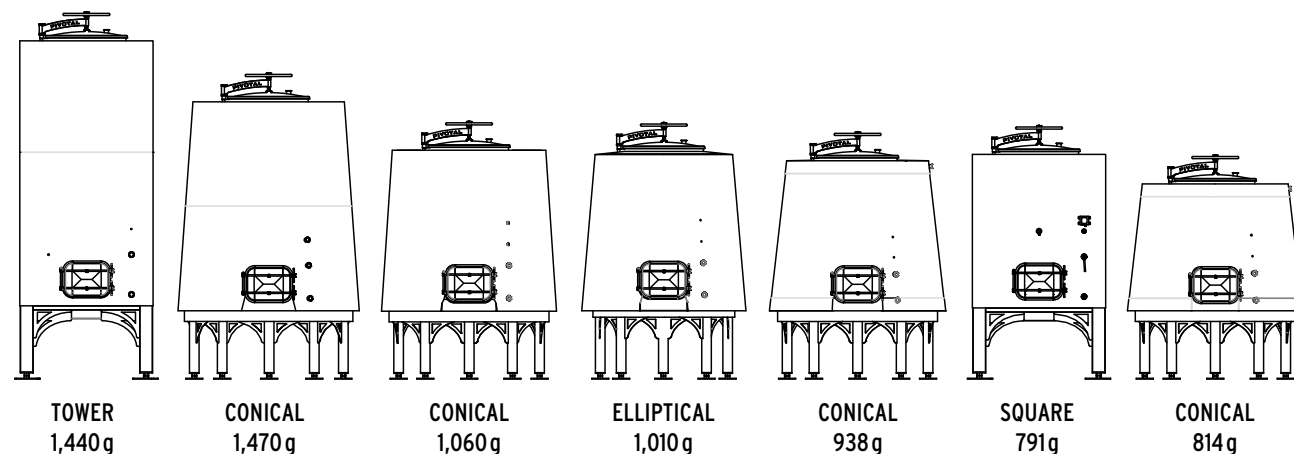
THE INFORMATION CONTAINED IN THIS DRAWING IS THE SOLE PROPERTY OF SONOMA CAST STONE CORP. ANY REPRODUCTION IN PART OR AS A WHOLE WITHOUT THE WRITTEN PERMISSION OF SONOMA CAST STONE CORP. IS PROHIBITED.

## Winemakers Around The World Have Returned To Concrete For Making Their Luxury Wines.

Concrete offers the best of oak and stainless, by breathing depth and complexity into the wine without imparting any unwanted flavor to mask the fruit. In this way, concrete allows the wine to showcase its true terrior and taste more like where it is from with pure fruit, enhanced mouthfeel and a hint of crisp minerality.

The premiere American concrete manufacturer, **Sonoma Cast Stone**, long known for innovation in concrete product design and formulation, has been placing magnificent concrete fixtures in luxury hotels, restaurants, and lush private homes for over 25 years.

With their jaw-dropping good looks and superior engineering, Sonoma Cast Stone concrete wine tanks have become the envy of the wine industry and are now sold around the world.



*Let us know when you're ready.*

### Only Sonoma Cast Stone Concrete Wine Tanks...

#### Are Engineered with A Concrete Layering System

The outer layer is a sprayed cementitious facecoat that gives a beautiful smooth appearance in any desired color. The second layer is a thick layup of high-tech glass-fiber reinforced concrete, which provides great strength and crack resistance. The inner layer is traditional cast concrete with no additives. The layers interlock for ultimate strength with the added benefit of thermal mass for stable temperatures.

### Only Sonoma Cast Stone Concrete Wine Tanks...

#### Are Made From Concrete Reviewed by The FDA

Sonoma Cast Stone is the only concrete vessel manufacturer to have our concrete analyzed by the FDA and determined safe for use in wine fermentation and aging.

### Only Sonoma Cast Stone Concrete Wine Tanks...

#### Offer Your Choice Of Color & Logo Treatment

With dozens of natural and designer colors and the option of custom blending, Sonoma Cast Stone far outpaces the color options of any other manufacturer.

### Only Sonoma Cast Stone Concrete Wine Tanks...

#### Are Made in America & Guaranteed Not To Crack

